

fischer & frichtel **4**

A Homebuilding Legacy Since 1945



VILLA COLLECTION

# THE FAIRFAX

1.5-STORY

---

3 Beds | 2.5 Baths | 2 Car Garage | 2,113 sq ft

---

\*The elevations on this brochure are an artist's conception and may vary slightly from actual construction.



VILLA COLLECTION

# THE FAIRFAX

1.5-STORY

3 Beds | 2 Baths | 2 Car Garage | 2,113 sq ft



## ELEVATION OPTIONS



Base Elevation



Elevation I



Elevation II



Elevation III



Elevation IV

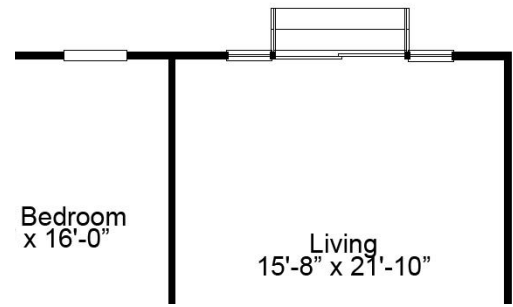
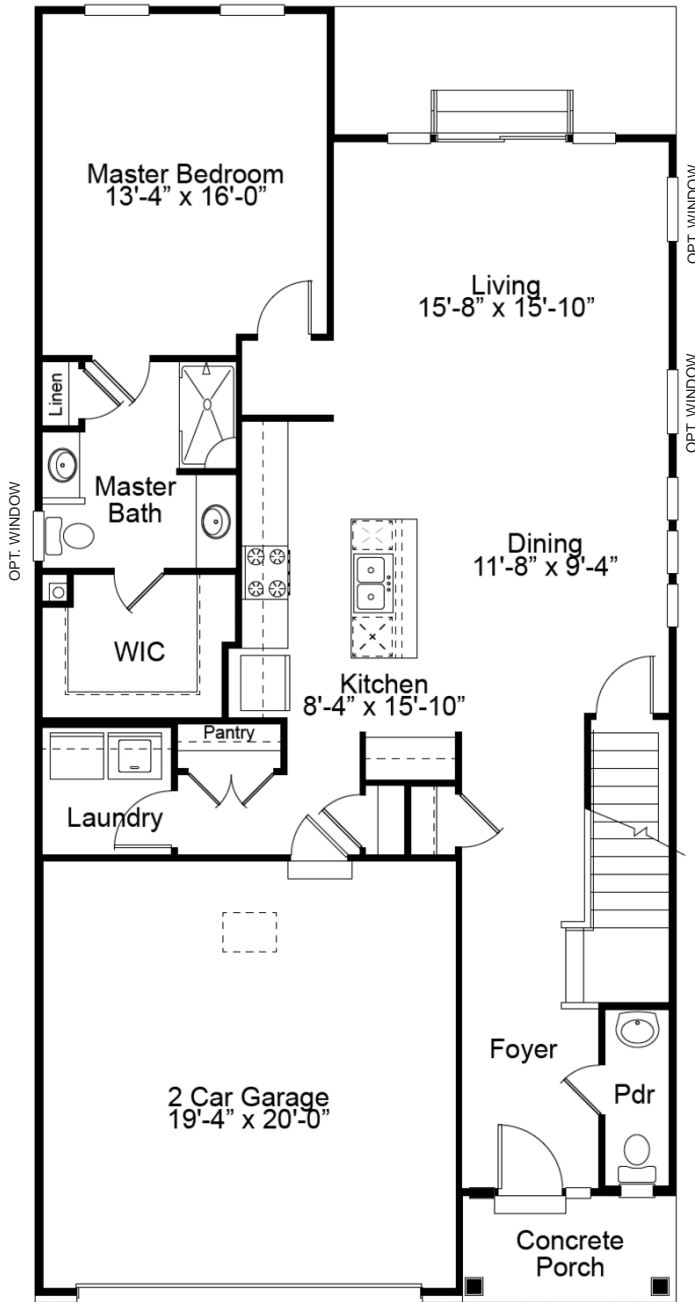


Elevation V

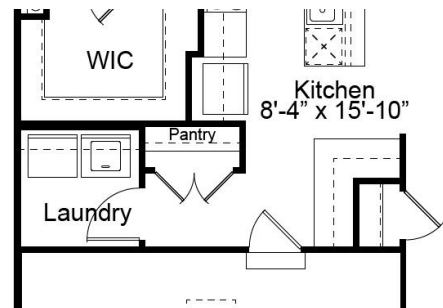


Please be sure to review actual blueprints with Community Sales Manager for complete details. Fischer & Frichtel Custom Homes has a policy of continuous improvements of products and reserves the right to make improvements or changes on products and prices without notice.

# FAIRFAX FIRST FLOOR PLAN



OPTIONAL 6' EXPANDED LIVING ROOM



OPTIONAL KEY DROP



OPTIONAL OPEN STAIR

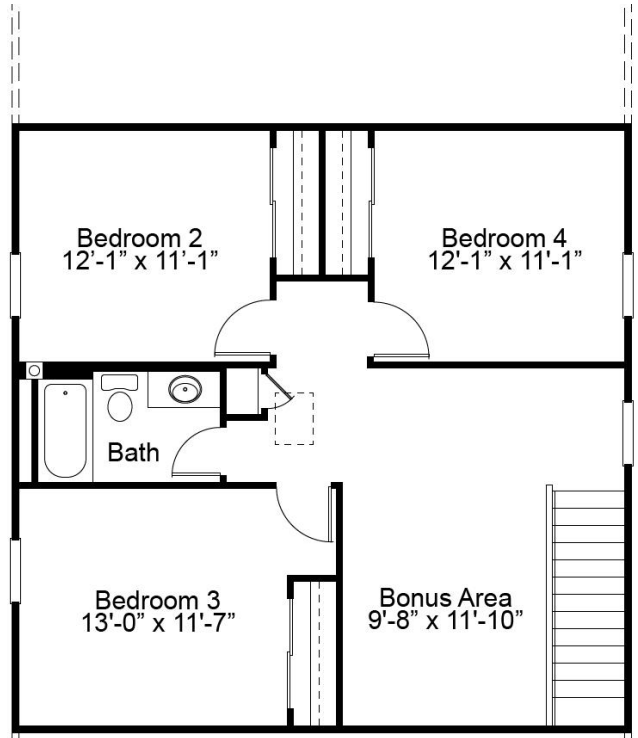
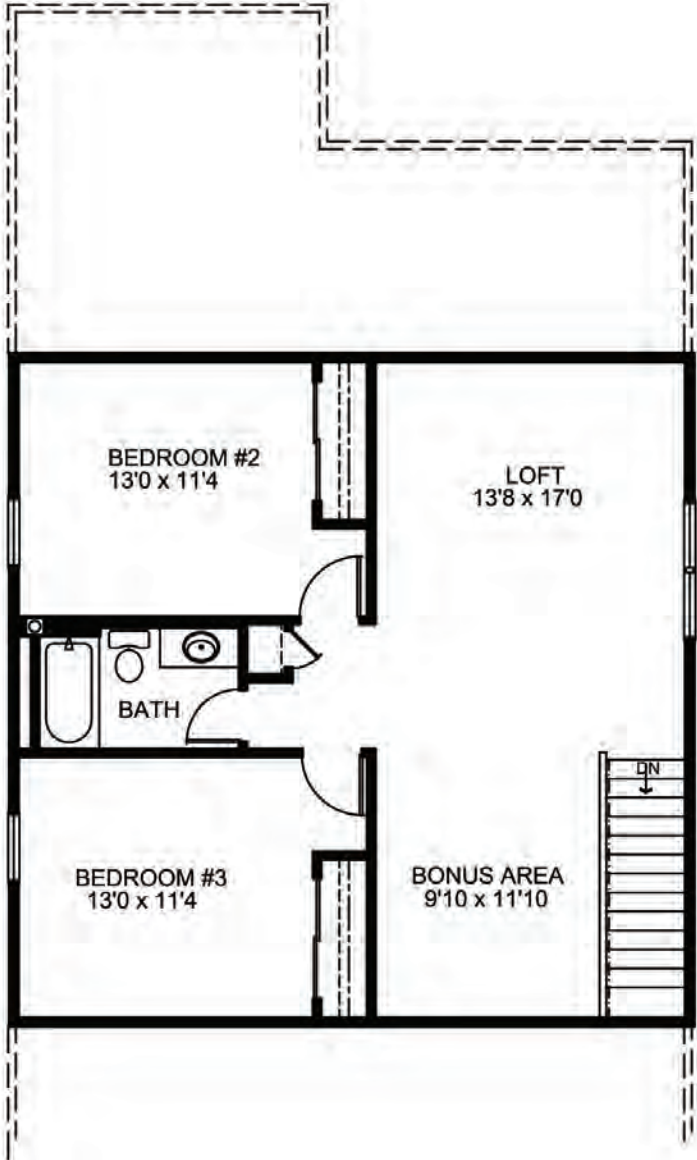
## THE FAIRFAX

The Fairfax is a generously sized 1.5 story villa home with 3 bedrooms, 2.5 baths, a spacious open concept floor plan, a main floor master suite and laundry room. Two additional bedrooms, a large loft and bonus area are located on the second floor. Several enhancement options are available, including a screened porch, optional second floor master bedroom, expanded living room and a finished lower level.

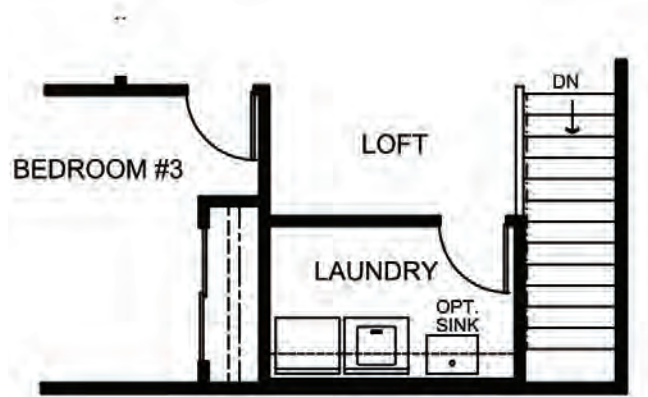


FandFHomes.com  
 Click on the Interactive Design Tool tab  
 to virtually explore your dream home

# FAIRFAX SECOND FLOOR PLAN



OPTIONAL 4 BEDROOM PLAN



OPTIONAL SECOND FLOOR LAUNDRY



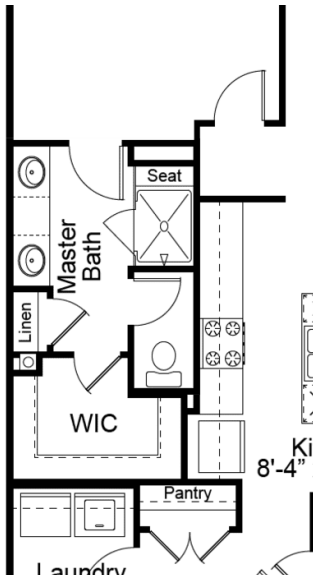
VILLA COLLECTION

# THE FAIRFAX

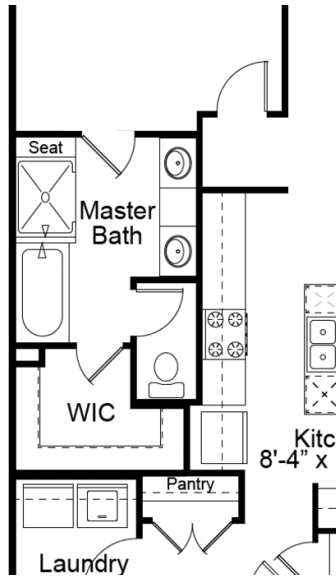
1.5-STORY

3 Beds | 2 Baths | 2 Car Garage | 2,113 sq ft

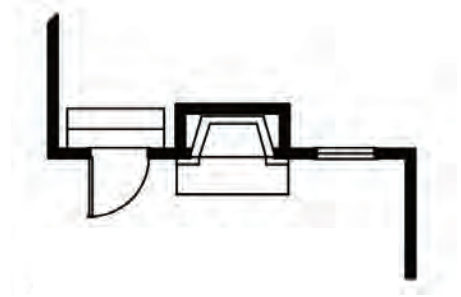
## FIRST FLOOR ENHANCEMENT OPTIONS



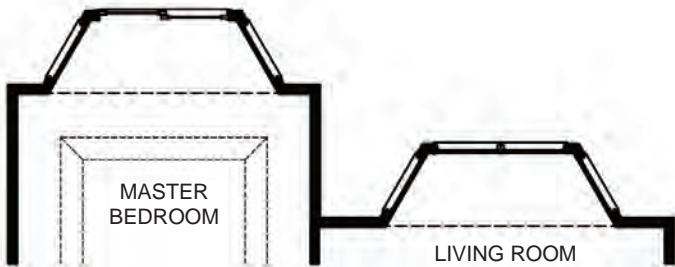
OPTIONAL SPA MASTER BATH



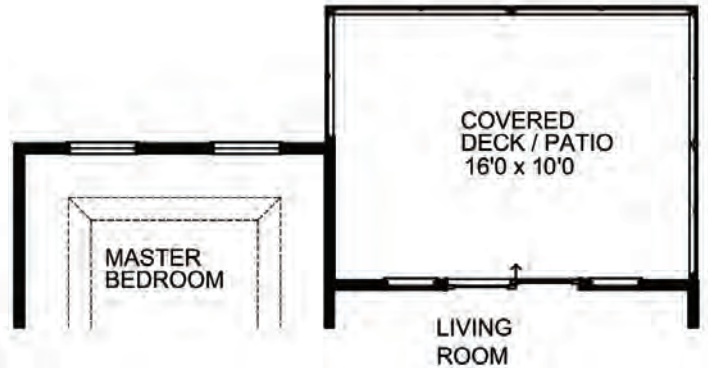
OPTIONAL LUXURY MASTER BATH



OPTIONAL GAS FIREPLACE IN LIVING ROOM



OPTIONAL BAY WINDOWS IN MASTER BEDROOM & LIVING ROOM



OPTIONAL COVERED DECK/PATIO



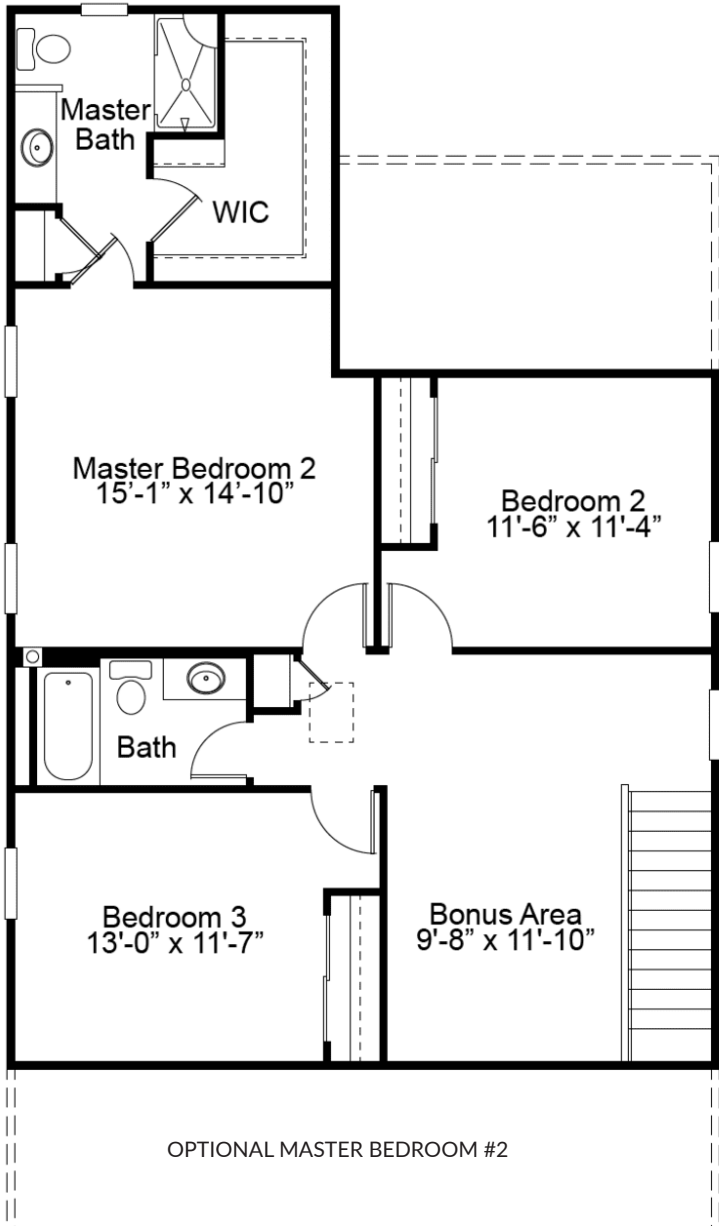
VILLA COLLECTION

# THE FAIRFAX

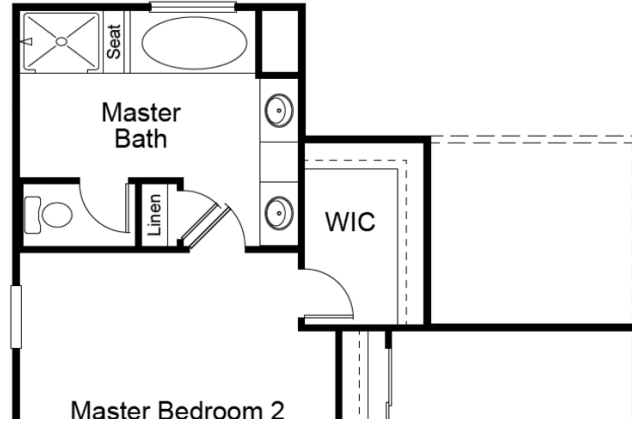
1.5-STORY

3 Beds | 2 Baths | 2 Car Garage | 2,113 sq ft

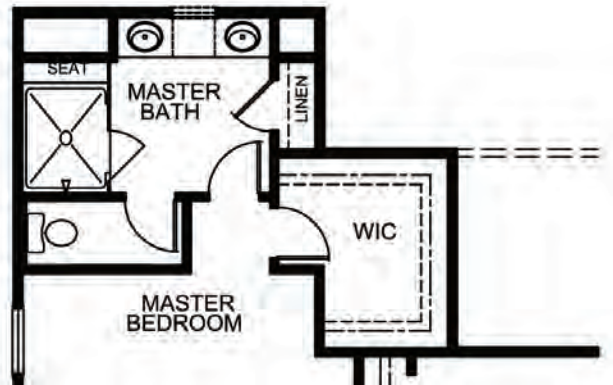
## SECOND FLOOR ENHANCEMENT OPTIONS



OPTIONAL MASTER BEDROOM #2



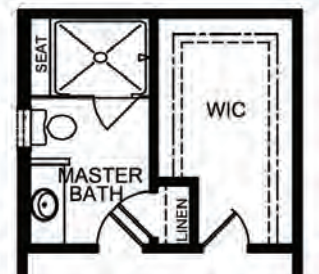
OPTIONAL LUXURY MASTER BATHROOM W/  
OPTIONAL MASTER BEDROOM #2



OPTIONAL SPA MASTER BATHROOM  
W/ OPTIONAL BEDROOM #2



OPTIONAL MASTER BATH



OPTIONAL SPA BATH



VILLA COLLECTION

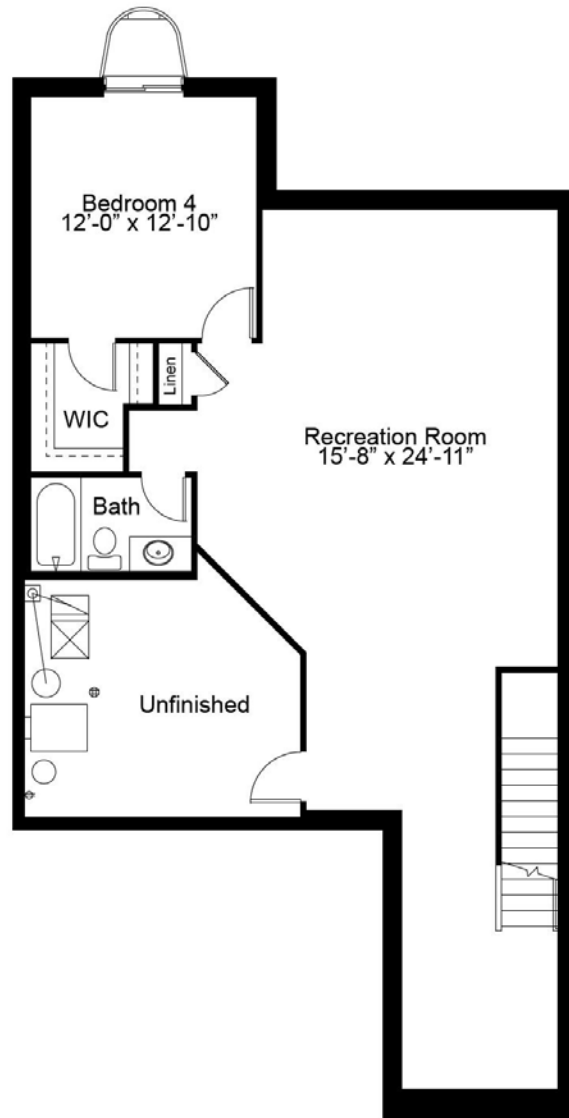
# THE FAIRFAX

1.5-STORY

3 Beds | 2 Baths | 2 Car Garage | 2,113 sq ft



## FAIRFAX OPTIONAL FINISHED LOWER LEVEL



Floor plans may show options not included in the base price. All dimensions are approximate and may vary with elevation. Please be sure to review actual blueprints with Community Sales Manager for complete details. Fischer & Frichtel Custom Homes has a policy of continuous improvements of products and reserves the right to make improvements or changes on products and prices without notice.

REV 3-23-2023