

fischer & frichtel **4**

A Homebuilding Legacy Since 1945



## VILLA COLLECTION

# THE ASHLAND - 3 BEDROOM RANCH

---

3 Beds | 2 Baths | 2 Car Garage | 1,347 sq ft

---

\*The elevations on this brochure are an artist's conception and may vary slightly from actual construction.





VILLA COLLECTION

# THE ASHLAND RANCH

2 Beds | 2 Baths | 2 Car Garage | 1,347 sq ft



## ELEVATION OPTIONS



Base Elevation



Elevation I



Elevation II



Elevation III



Elevation IV

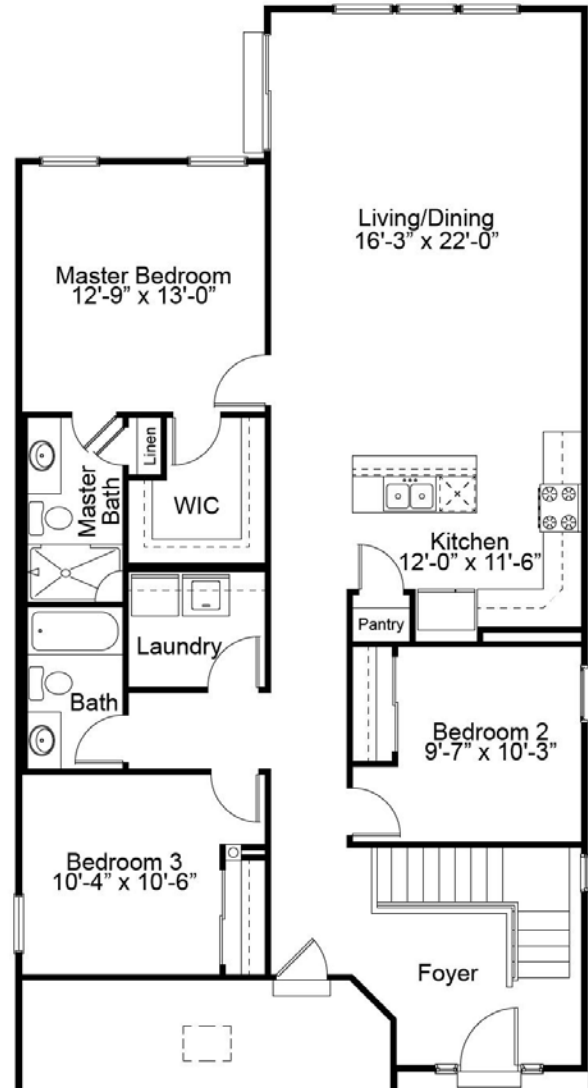
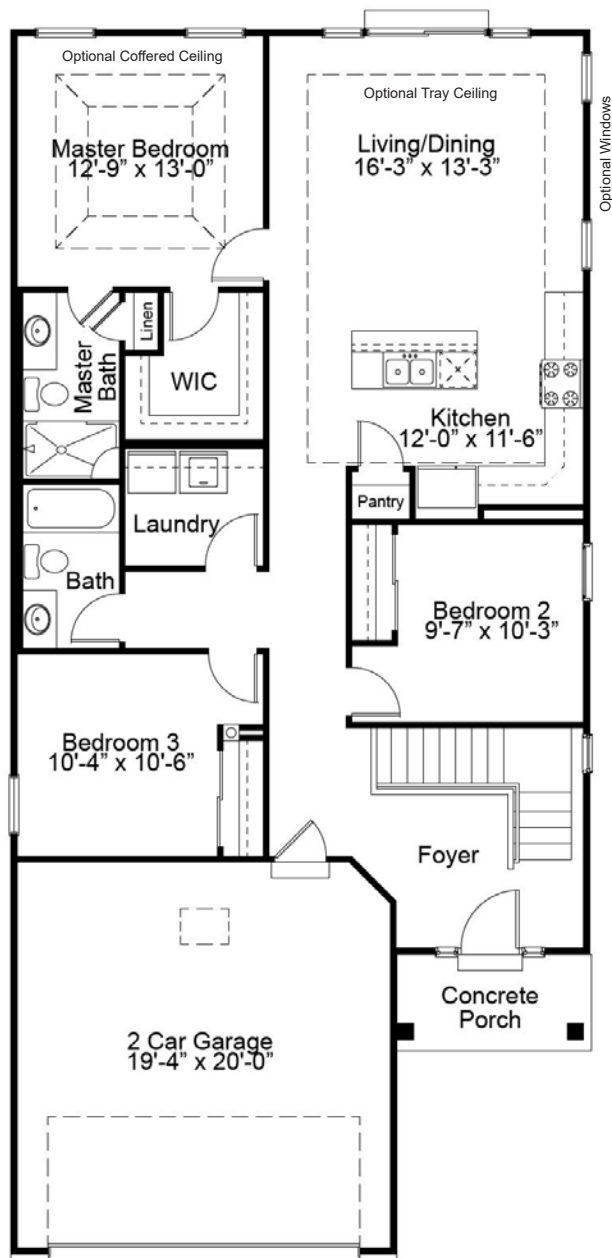


Elevation V



Please be sure to review actual blueprints with Community Sales Manager for complete details. Fischer & Frichtel Custom Homes has a policy of continuous improvements of products and reserves the right to make improvements or changes on products and prices without notice.

# ASHLAND 3 BEDROOM FIRST FLOOR PLAN



OPTIONAL 8' EXTENSION

## THE ASHLAND

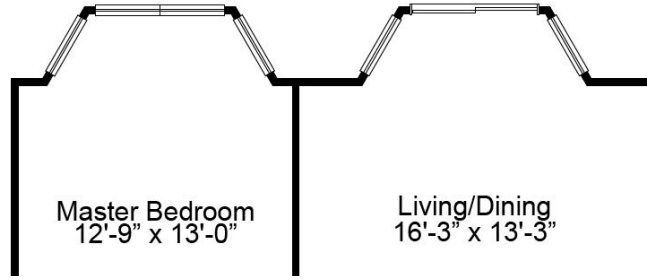
The Ashland 3 bedroom is a villa-style ranch home with an open kitchen, dining and living room area and two baths. The spacious master suite, which is situated in the back of the home, features a large walk-in closet and luxurious master bath with a linen closet. Enhancement options including a covered deck or patio, gas fireplace and a finished lower level may be added to further personalize this beautiful home to your liking.



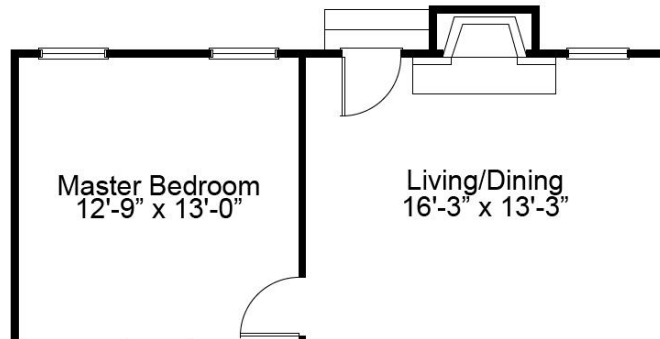
[FandFHomes.com](http://FandFHomes.com)  
Click on the Interactive Design Tool tab  
to virtually explore your dream home



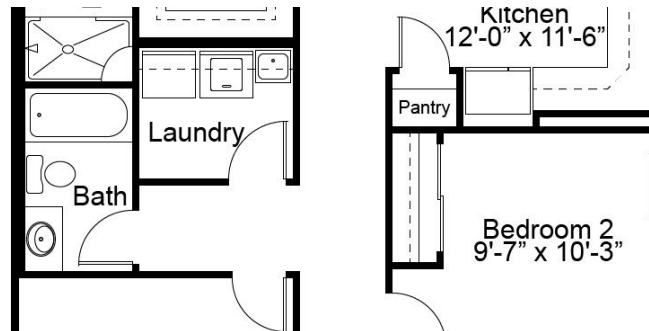
# ASHLAND 3 BEDROOM ENHANCEMENT OPTIONS



OPTIONAL BAY WINDOWS IN MASTER BEDROOM AND LIVING ROOM



OPTIONAL FIREPLACE IN LIVING ROOM



OPTIONAL LAUNDRY TUB

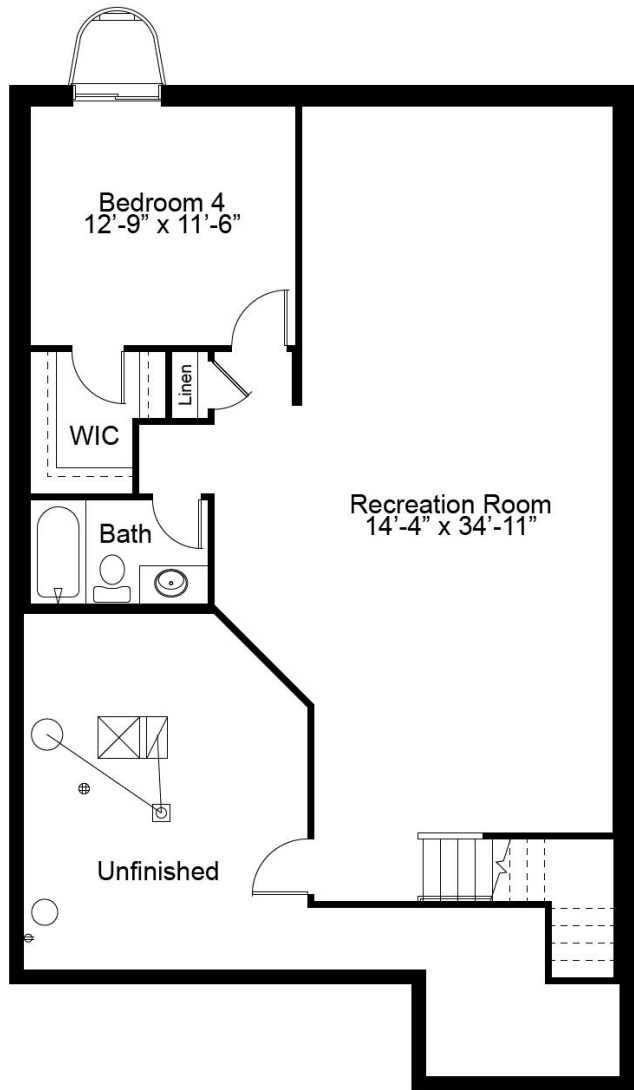


VILLA COLLECTION

# THE ASHLAND - 3 BEDROOM RANCH

3 Beds | 2 Baths | 2 Car Garage | 1,347 sq ft

## ASHLAND OPTIONAL FINISHED LOWER LEVEL



Floor plans may show options not included in the base price. All dimensions are approximate and may vary with elevation. Please be sure to review actual blueprints with Community Sales Manager for complete details. Fischer & Frichtel Custom Homes has a policy of continuous improvements of products and reserves the right to make improvements or changes on products and prices without notice.